

Wire bondable Vertical Silicon Capacitor WBSC / WLSC 0303 10nF BV100



Rev.3.05

General description

WBSC / WLSC Capacitors targets power supplies decoupling and filtering of active devices. They are based on PICS Integrated Passive technology.

This product is a single 10nF capacitor in 0303 package size. Other capacitance values and other package size are available as a single die or capacitor array; please feel free to contact us.

WLSC capacitors are directly mounted on the PCB application using die bonding and wire bonding processes. Standard FR4 PCB can be used. The bottom electrode is in TiNiAu and the top electrode is in TiWAu. Other top finishings such as Aluminum are available on request.

Key features

- Compatible with MLCC footprint
- Ultra-high stability of capacitance value:
 - Temperature 70ppm/K (-55 °C to +150 °C)
 - Voltage <-0.02%/Volt
 - Negligible capacitance loss through ageing
- Low profile 0.1mm or 0.25mm
- Small size 0.80 x 0.80 mm (0303 format)
- Break down voltage: 100V
- Low leakage current
- High reliability
- High operating temperature (up to 150 °C)
- Compatible with high temperature cycling during manufacturing operations (exceeding 300 °C)
- Compatible with EIA 00303 footprint
- Applicable for standard wire bonding assembly (ball and wedge)

Key applications

- Any demanding applications, such as medical, aerospace, industrial...
- Supply decoupling / filtering of active device
- High reliability applications
- Battery operated devices
- High temperature applications
- High volumetric efficiency (i.e. capacitance per unit volume)



Functional diagram

The next figure provides implementation set-up diagram.

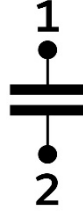


Figure 1 Block Diagram

Electrical performances

Symbol	Parameter	Conditions	Min.	Typ.	Max.	Unit
C	Capacitance value	@+25°C	-	10	-	nF
ΔC_P	Capacitance tolerance ⁽¹⁾	@+25°C	-15	-	+15	%
T _{OP}	Operating temperature		-55	20	150	°C
T _{STG}	Storage temperature ⁽²⁾		-70	-	165	°C
ΔC_T	Capacitance temperature variation	-55°C to +150°C	-	41	-	ppm/K
RV _{DC}	Rated voltage ⁽³⁾		-	-	33 ⁽⁴⁾ 29 ⁽⁵⁾	V _{DC}
BV	Breakdown voltage	@+25°C	100	-	-	V _{DC}
ΔC_{RVDC}	DC Capacitance voltage variation	From 0V to RV _{DC} , @+25°C	-	-	-0.02	%/V _{DC}
IR	Insulation resistance	@ RV _{DC} , +25°C, 120s	-	100	-	GΩ
ESR	Equivalent Series Resistance	@+25°C, shunt mode	-	250	-	mΩ
ESL	Equivalent Series Inductance	@+25°C, SRF shunt mode	-	20	-	pH
ESD	HBM stress ⁽⁶⁾	JS-001-2017	2	-	-	kV

Table 1 - Electrical performances

(1): other tolerance available upon request

(2): without packaging

(3): Lifetime is voltage and temperature dependent, please refer to application note 'Lifetime of 3D capacitors'

(4): 10 years of intrinsic life time prediction at 100°C continuous operation

(5): 10 years of intrinsic life time prediction at 150°C continuous operation

(6): please refer to application note 'ESD Challenge in 3D Murata Integrated Passive technology'

For extended frequency range (up to 26GHz), see Ultra large band Wire bondable vertical Silicon Capacitor (UWSC).



Impedance characteristic of 10nF WLSC/WBSC in Shunt mode

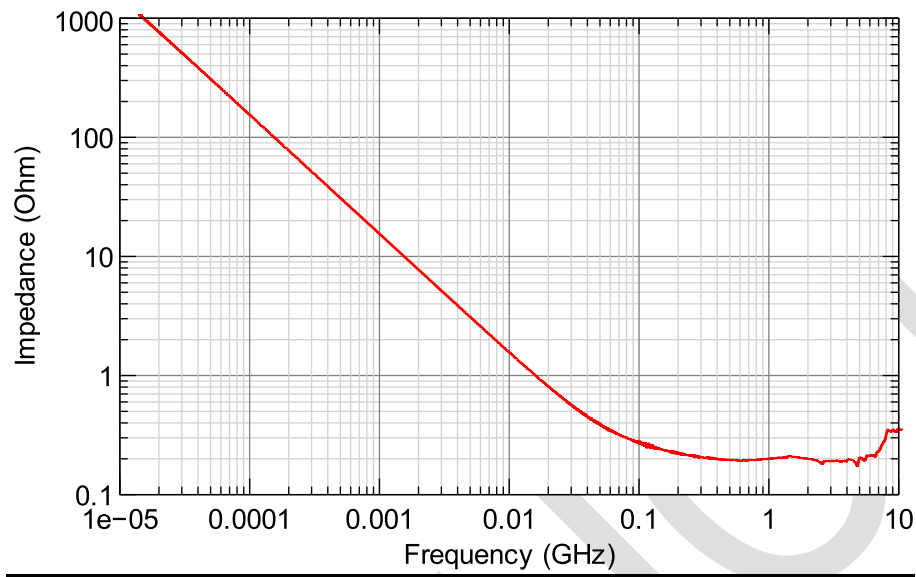


Figure 4 - 10nF WLSC/WBSC measurement results (Impedance characteristic versus Frequency in shunt mode)

Schematic of 10nF WLSC/WBSC in Shunt mode

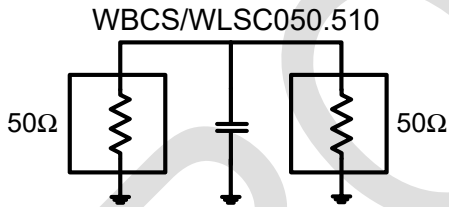


Figure 2 - 10nF WLSC/WBSC measurement schematic

Example of mounted 0303

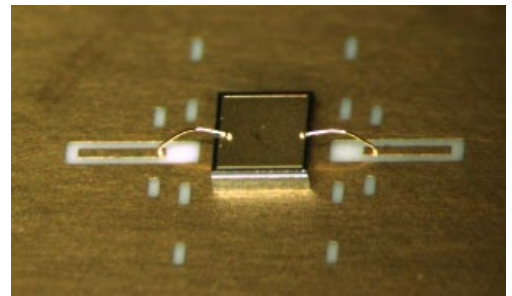


Figure 3 – micro picture of mounted 0303 WLSC



Pinning definition

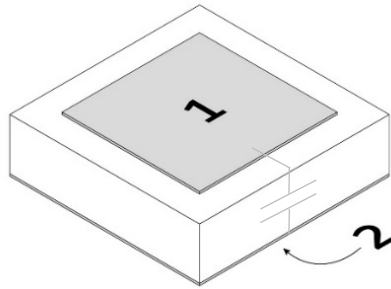


Figure 5 Pinning definition

pin #	Symbol	Metalization
1	Signal	TiWAu
2	GND	TiNiAu

Table 2 - Pinning description.

Ordering Information

Part number	Package			Die Name
	Packaging	Finishing	Description	
935142050510-F1T	6" FFC	Au ⁽¹⁾	WBSC 10nF/0303/BV100 1 bondpad 0.80 x 0.80mm x 0.25mm ⁽²⁾	WK0303510
935142050510-F2T	8" FFC	Au ⁽¹⁾		
935142050510-T3T	T&R 1Kunits ⁽³⁾	Au ⁽¹⁾		
935142050510-E1T	6" GR	Au ⁽¹⁾		
935142050510-W0T	Waffle pack 400units	Au ⁽¹⁾		
935146050510-F1T	6" FFC	Au ⁽¹⁾	WLSC 10nF/0303/BV100 1 bondpad 0.80 x 0.80mm x 0.10mm ⁽²⁾	WK0303510
935146050510-F2T	8" FFC	Au ⁽¹⁾		
935146050510-T3T	T&R 1Kunits ⁽³⁾	Au ⁽¹⁾		
935146050510-E1T	6" GR	Au ⁽¹⁾		
935146050510-W0T	Waffle pack 400units	Au ⁽¹⁾		

Table 3 - Packaging and ordering information

(1) detail for pad finishing: cf pad metallization chapter
 (2) Refer to Package outline
 (3) missing capacitors can reach 0.5% (only applicable to T&R)



Pad Metallization

This wire bondable capacitor is delivered as standard with the bottom electrode in TiNiAu ($Ti (0.1 \mu m)/Ni (0.3 \mu m)/Au (0.2 \mu m)$) and top electrode in TiWAu ($TiWAu (0.3 \mu m) / Au (3 \mu m)$).

Other Metallization, such as thick Gold or Aluminum top pads are possible on request.

Silicon dies are not sensitive to humidity, please refer to applications notes 'Assembly Notes' section 'Handling precautions and storage'.

Material regulation

This product is RoHS compliant at the time of publication. For further information about regulation compliancy, please ask your sales representative.

PRODUCTION



Package outline

The product is delivered as a bare silicon die.

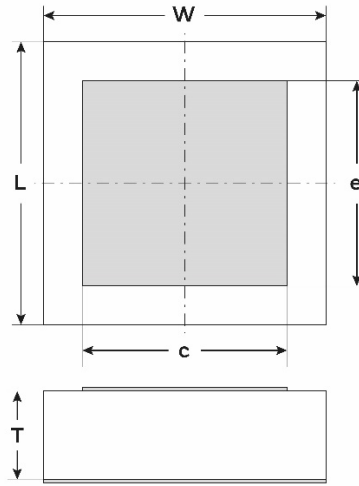


Figure 6 - Package outline drawing

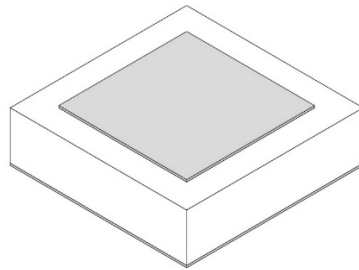


Figure 7 - Package isometric view

L (mm)	W (mm)	T (mm)	c (mm)	e (mm)
0.80 ±0.02	0.80 ±0.02	0.25 or 0.10 ±0.01	0.58	0.58

Table 4 - Dimensions and tolerances



Assembly

WBSC/WLSC capacitors are directly mounted on the PCB application using die bonding and wire bonding. It is applicable for standard wire bonding assembly (ball and wedge).

For further information, please see our mounting application note.

The attachment techniques recommended by Murata on the customer's substrates are fully detailed in specific documents available on our website. To assure the correct use and proper functioning of Murata capacitors **please download the assembly instructions on <https://www.murata.com/en-us/products/capacitor/siliconcapacitors> and read them carefully.**



Figure 8 Scan this QR Code to access the Murata Silicon Capacitor web page



Packaging format

Please refer to application note 'Products Storage Conditions and Shelf Life'.

Tape and Reel:

Die orientation (No flip) within the case related to T&R orientation.

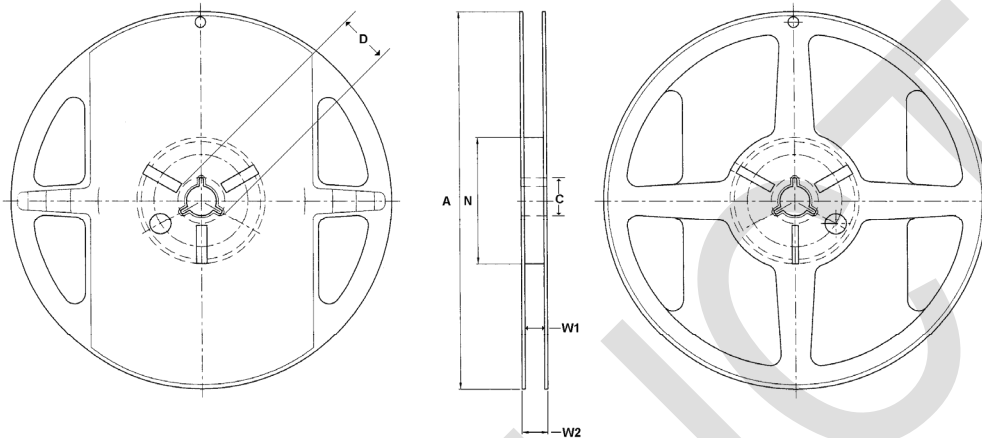


Figure 9 - Reel drawing

Tape Width	Diameter A	C	D	N	W1	W2
8	178 (7 inches)	13.5	20.2	60	9.3	11.5

Table 5 – Reel dimensions (mm)

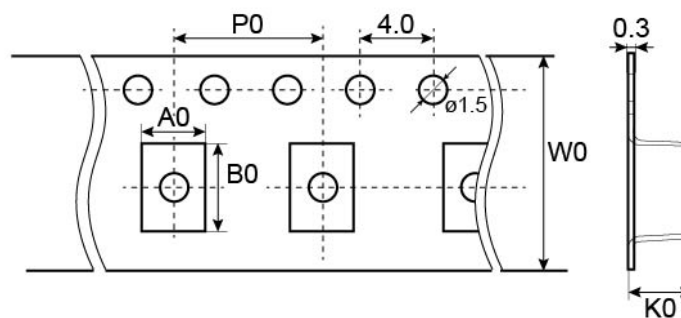


Figure 10 - Tape drawing

Cavity dimensions			Carrier tape width W0	Carrier tape pitch P0	Reel Capacity
Ao	Bo	Ko			
1.1	1.1	0.30	8 mm	4mm	1000

Table 6 - Tape dimensions (mm)



Waffle pack:

Please refer to application note 'Waffle Pack Chip Carrier Handling & Opening Procedure'. Die orientation (No flip) within the case related to waffle pack orientation.

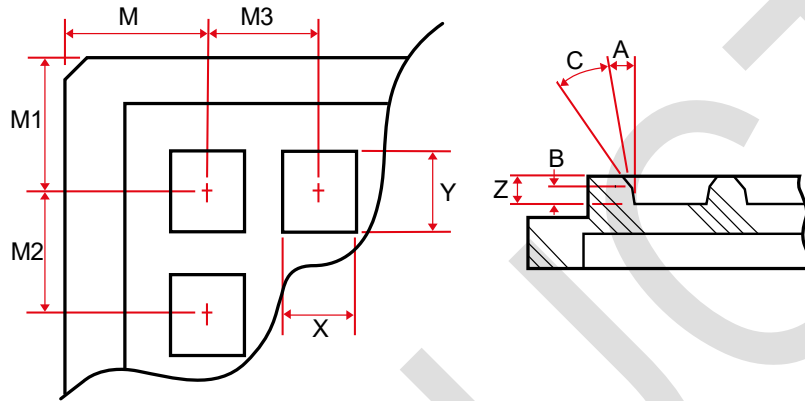


Table 7 - Waffle pack drawing

External dimensions	Max. capacity	Pocket length X	Pocket width Y	Pocket depth Z
2 inches	20 x 20	0.94 ±0.05	0.94 ±0.05	0.28 ±0.05

Table 8 - Waffle pack dimensions (mm)

M	M1	M2	M3	A
5.31 ±0.08	5.31 ±0.08	2.11 ±0.05	2.11 ±0.05	7° ±1/2°

Table 9 - Waffle pack dimensions (mm)



Film Frame Carrier:

With UV curable dicing tape (UV performed).

Good dies are identified using the SINF electronic mapping format. No ink is added on wafer to label other dies.

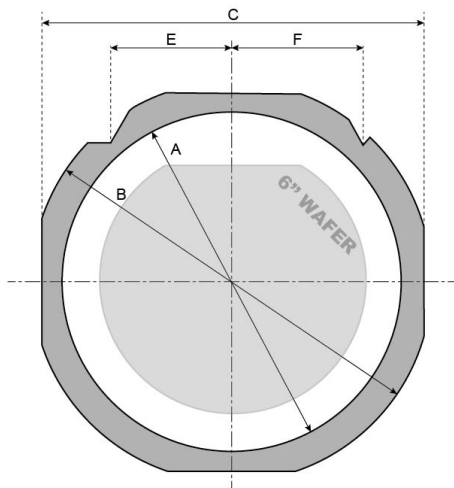


Figure 11 FF070 Frame with a 6" wafer

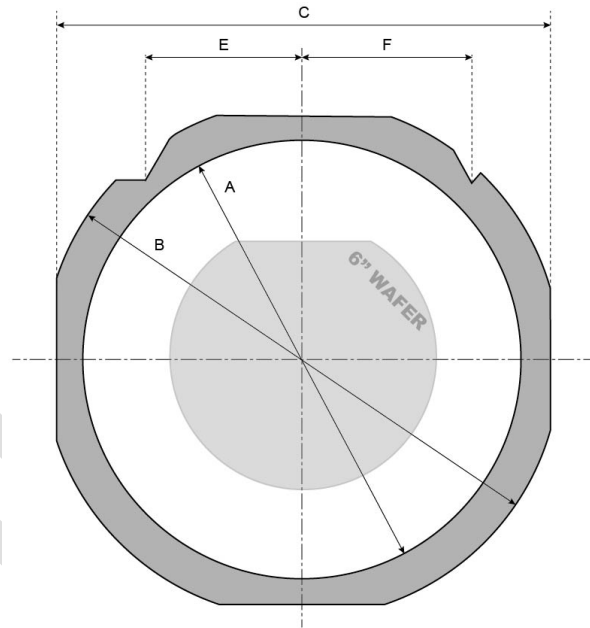


Figure 12 FF108 Frame with a 6" wafer

Frame Reference	Frame Style	Inside diameter A	Outside diameter B	Width C	Thickness	Pin location E	Pin location F
FF070 (1)	DTF-2-6-1	7.638"	8.976"	8.346"	0.048"	2.370"	2.5"
FF108 (1)	DTF-2-8-1	9.842"	11.653"	10.866"	0.048"	2.381"	2.5"

Table 10 - Frame dimensions (inches)

(1) or equivalent



Expander grip ring 6" diameter:

With UV curable dicing tape (UV performed)

Good dies are identified using the SINF electronic mapping format. No ink is added on wafer to label other dies.

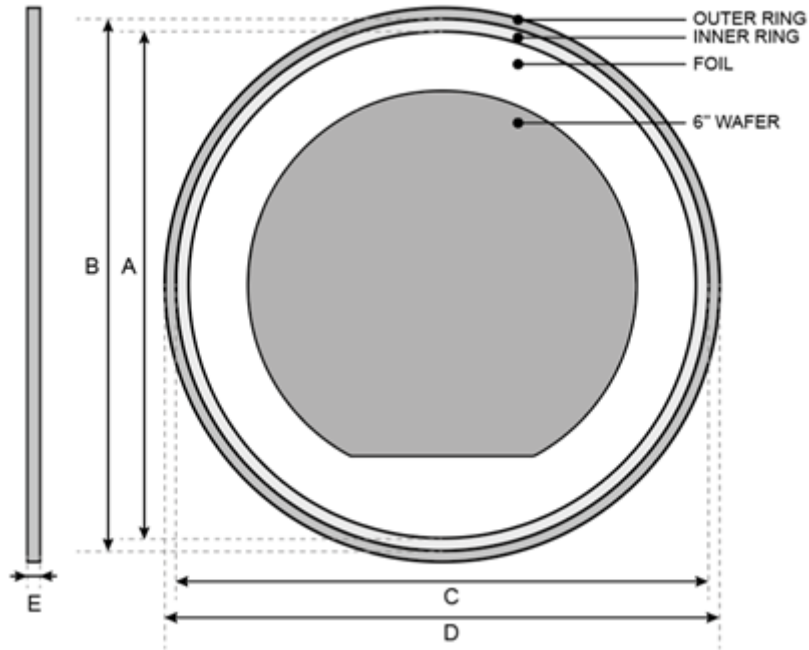


Figure 13 – Grip Ring drawing

Grip Ring Style	A	B	C	D	E	Locator Notch
GRP-2620-6 ⁽¹⁾	7.670"	7.973"	7.975"	8.280"	0.236"	None

Table 11 - Frame dimensions (inches)

(1) or equivalent

Definitions

Data sheet status

Objective specification: This data sheet contains target or goal specifications for product development.

Preliminary specification: This data sheet contains preliminary data; supplementary data may be published later.

Product specification: This data sheet contains final product specifications.

Limiting values

Stress above one or more of the limiting values may cause permanent damage to the device. These are stress ratings only and operation of the device at these or any other conditions above those given in the Electrical performances sections of this specification is not implied. Exposure to limiting values for extended periods may affect device reliability.

Application information

Where application information is given, it is advisory and does not form part of the specification.

Revision history

Revision	Date	Description	Author
Rev 1.0	2018 January 09th	Objective specification	OGA
Rev 2.0	2020 March 10th	Preliminary specification	SCA
Rev 2.01	2021, February 19 th	Layout and content update	CGU /LLE/SCA/OGA
Rev 2.02	2021, June 30 th	GR drawing and measurement curve	LLE/SCA/OGA
Rev 3.01	2022, June 27 th	Product specification	LLE/SCA/DDE/OGA
Rev 3.02	2025, Feb 27 th	WP drawing and specification	MOK/DYE/MRA/OGA
Rev 3.03	2025, Mar20 th	Update of WP drawing and specification	MOK/DYE/MRA/OGA
Rev 3.04	2025, April 4 th	Update on Ordering Information	SCA
Rev 3.05	2025 October 22th	Key applications have been updated according to the latest market requirement. Ordering information has been updated according to the latest product lineup and specification.	CGU, HFU

Disclaimer / Life support applications

These products are not designed for use in life support appliances, devices, or systems where malfunction of these products can reasonably be expected to result in personal injury. Murata customers using or selling these products for use in such applications do so at their own risk and agree to fully indemnify Murata for any damages resulting from such improper use or sale.

Murata Integrated Passive Solutions S.A. makes no representation that the use of its products in the circuits described herein, or the use of other technical information contained herein, will not infringe upon existing or future patent rights. The descriptions contained herein do not imply the granting of licenses to make, use, or sell equipment constructed in accordance therewith. Specifications are subject to change without notice.



www.murata.com

mis@murata.com



Reproduction in whole or in part is prohibited without the prior written consent of the copyright owner. The information presented in this document does not form part of any quotation or contract, is believed to be accurate and reliable and may be changed without notice. No liability will be accepted by the publisher for any consequence of its use. Publication thereof does not convey nor imply any license under patent or other industrial or intellectual property rights.

PRODUCTION

Murata Integrated Passive Solutions S.A. makes no representation that the use of its products in the circuits described herein, or the use of other technical information contained herein, will not infringe upon existing or future patent rights. The descriptions contained herein do not imply the granting of licenses to make, use, or sell equipment constructed in accordance therewith. Specifications are subject to change without notice.



www.murata.com

mis@murata.com